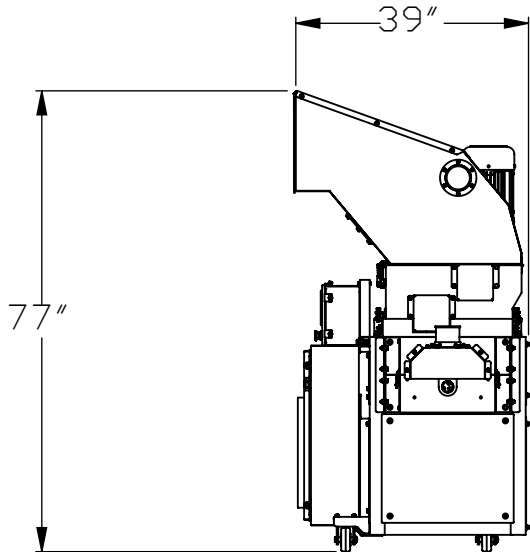
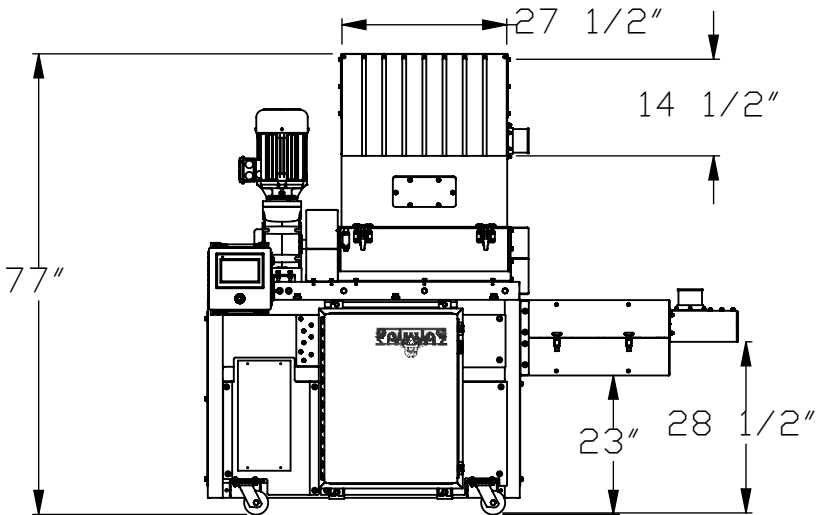
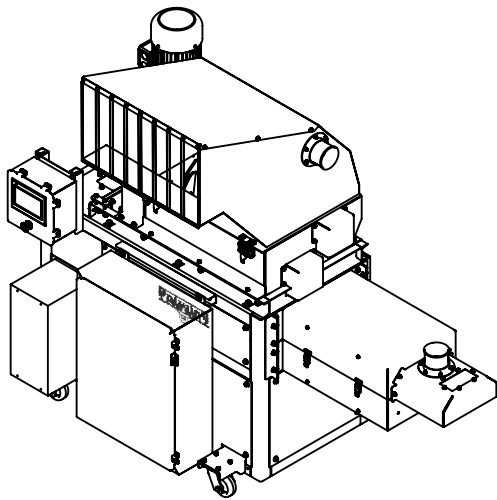
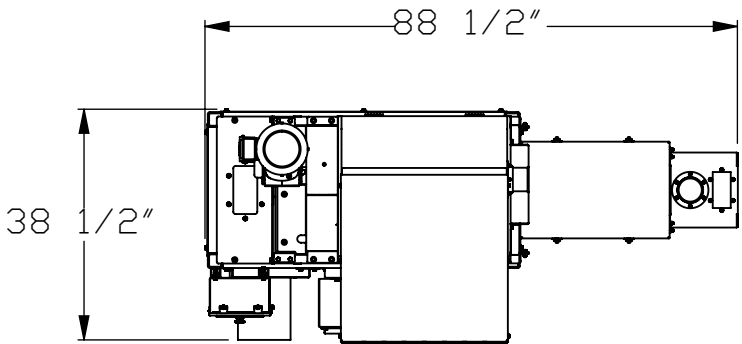


PROPRIETARY INFORMATION

THIS DRAWING IS THE CONFIDENTIAL PROPERTY OF BETTER DENSIFIERS. AND IS TRANSMITTED IN CONFIDENCE. THE REPRODUCTION, USE OR DISCLOSURE, IN WHOLE OR IN PART, OF THE DESIGN OR DETAILS CONTAINED HEREIN IS PROHIBITED WITHOUT THE EXPRESS WRITTEN PERMISSION OF BETTER DENSIFIERS.



PWH-300 HOT MELT DENSIFIER
FOAMS: EPS, EPE, EPP
REDUCTION: 90:1
ESTIMATED THROUGHPUT: 300LBS/HOUR
FEED OPENING: 14 1/2" X 27"
FEED: MANUAL
VOTLAGE: 460V 3PH
MOTORS: 5HP CRUSHER, 15HP AUGER
ADDITIONAL AMPERAGE DRAW DUE TO HEATERS
WEIGHT: 2500LBS
POWDER COAT:
-TOP PORTION :RAL 3004 PURPLE RED,
-BOTTOM PORTION: RAL 7011 IRON GRAY
ADDITIONAL:
-2 FORMS: 24" X 16" X 6"

SAFETY REVIEW

THE NEED FOR SAFETY DEVICES VARIES WITH EACH APPLICATION OF THIS PRODUCT. THIS DRAWING MAY NOT INCLUDE ALL APPROPRIATE SAFETY DEVICES FOR YOUR APPLICATION. AS SYSTEMS INTEGRATOR, PLEASE ADVISE YOUR CUSTOMER OF DEVICES THAT ARE APPROPRIATE FOR HIS/HER APPLICATION, BASED ON YOUR SAFETY ASSESSMENT. DEVICES MAY INCLUDE, BUT ARE NOT LIMITED TO THOSE SUCH AS, ADDITIONAL GUARDING, SAFETY CONTROLS, BARRICADES, END STOPS, ETC. COMPLIANCE WITH FEDERAL, STATE, OSHA AND LOCAL LAWS OR CODES ARE THE RESPONSIBILITY OF BOTH YOU, AS THE SYSTEMS INTEGRATOR/DISTRIBUTOR, AND THE END USER.

APPLICATION REVIEW

PLEASE REVIEW THE MACHINE DESIGN FOR ITS ABILITY TO FUNCTION PROPERLY IN YOUR INTENDED APPLICATION. SYSTEM INTEGRATION AND APPLICATION REVIEW ARE NOT THE RESPONSIBILITY OF BETTER DENSIFIERS. THEREFORE, BETTER DENSIFIERS. MAKES NO CLAIM AS TO THE PERFORMANCE OF THIS DESIGN FOR ANY PARTICULAR PURPOSE OR APPLICATION.

APPROVED
AS SHOWN AS NOTED
CO. NAME _____
SIGNATURE _____
DATE _____

BETTER
DENSIFIERS

PAINT COLOR:

REF NO:
DRAWN BY: JEB
SCALE: N/A

TITLE: PWH-300

APPROVAL

DATE: 10/31/2024 4:19:07 PM